



## Your Data is at Risk

Cyber-criminals spend huge amounts of time searching the world's networks for vulnerabilities, for one simple reason. It pays.

With the dramatic increase in remote activities, from work to education to play, the opportunities for cyber-crime have only increased. The number of places where vulnerabilities can exist – the “attack surface” – continues to expand, to the delight of hackers everywhere. And common solutions to cyber-security, built around old enterprise datacenter network architectures– firewall appliances, VPNs, laptop malware detection software, and many others – are no longer keeping up in a world of cloud-enabled SaaS/PaaS solutions and the acceptance of “Bring-Your-Own-Device” (BYOD).

### Secure Access Service Edge (SASE) Framework

As an IT professional, you know that a comprehensive security solution needs to support all user devices and not just any one in particular. The solution must focus on your data—wherever it is (Data at-Rest), and wherever it is going (Data-in-Motion). And, you must be able to manage the entire solution from a single browser-based user interface, on whatever device you are using, wherever you are.

Many vendors are beginning to provide their security solutions based on a Secure Access Service Edge (SASE) architecture that rolls connectivity and security into a cloud service. This approach is intended to provide simplified WAN deployment, improved efficiency and security, and secure access to cloud and enterprise applications. These SASE solutions are available through security vendors that bolt on a SD-WAN solution, or SD-WAN vendors that bolt on a security service.

## vTPN™ Security Service

### KEY FEATURES AND BENEFITS

#### Simple Setup

Zero Touch Provisioning (ZTP) lowers IT costs and truck rolls.

#### Simple Management

View alerts, messages, and device/user status, as well as set up advanced protection profiles for WFH remote workers through a single user interface (UI).

#### Complements Your Existing Solution

Overlays your existing security infrastructure; no ‘rip and replace’.

#### Full-Stack Security

Protect your network and every endpoint and user.

#### Security & Connectivity Integration

Combine networking, security, and edge computing, dramatically reducing acquisition and operational costs.

#### Data-in-Motion Protection

Protect data movement between devices, public and private networks, data centers, and cloud.

#### Managed Services Option

Reduce the burden on IT staff and make your IT expenses more predictable while maintaining quality of service.

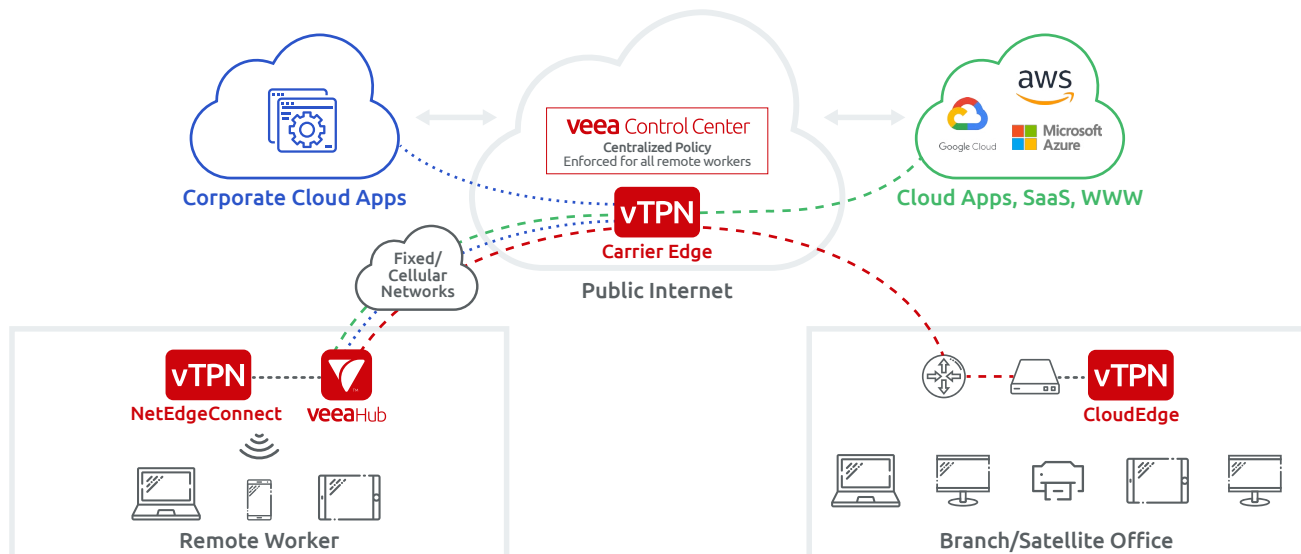
## The vTPN Security Service

The vTPN Security Service is a SASE solution that integrates smart edge appliances (Smart Computing Hubs and components) to a centralized cloud-based full security stack.

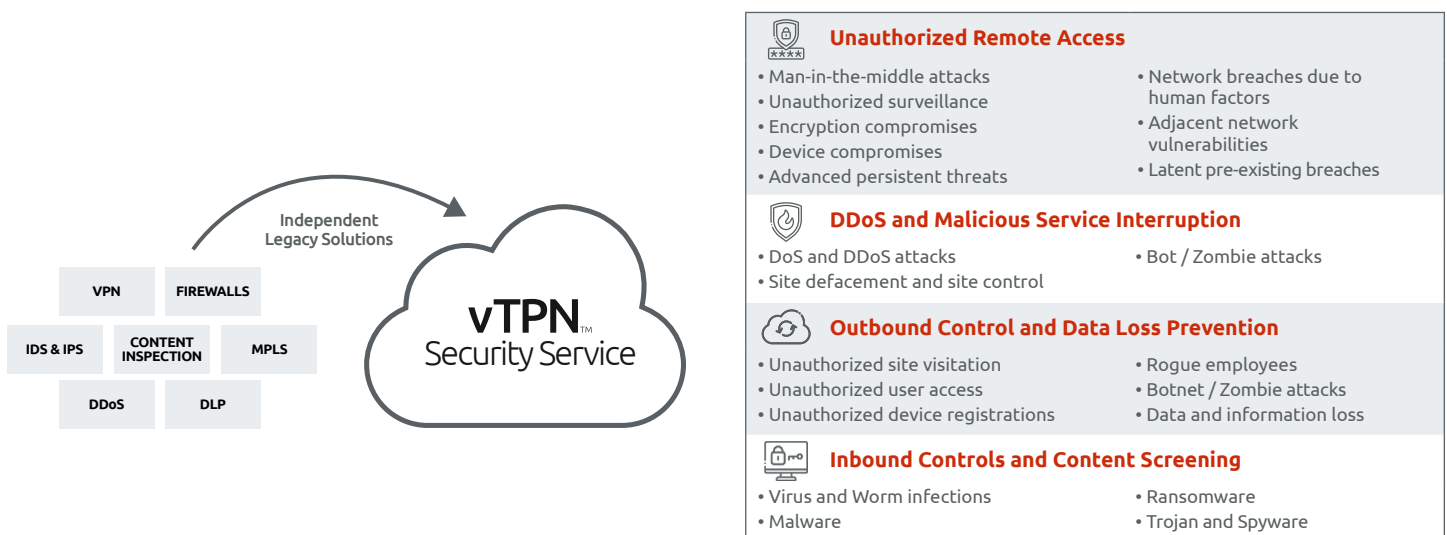
The vTPN Service combines networking, security, and edge computing in a single integrated cloud service, addressing the security and networking needs of tomorrow's users, devices, applications, services, and data that is rapidly shifting outside the enterprise data center. It provides end-to-end security, whether the source is a remote worker, a branch location, or headquarters. Threat

prevention capabilities include encryption of all communications, firewalls, URL filtering, anti-malware, and intrusion prevention systems (IPS). These capabilities are available to all connected network endpoints and maintain a high level of security by continuously monitoring sessions for risk and breaches.

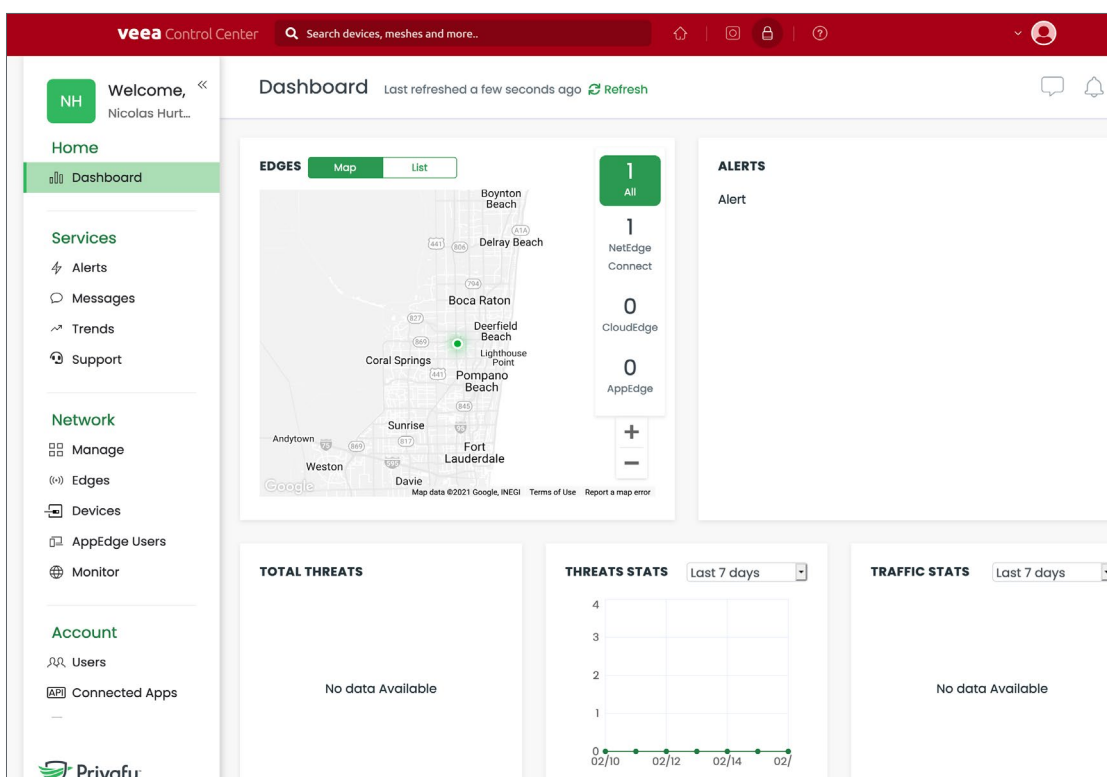
Because it's a cloud-managed service, it can be readily scaled up or down, and is an attractive option in a time of rapid change—increasing your security team's effectiveness while mitigating cyber threats and attacks.



**Figure 1:** vTPN Security Service for enterprise branch locations and remote workers



**Figure 2:** Superior threat protection with full-stack security



**Figure 3:** The vTPN Service dashboard supports operations enabling you to monitor your network and understand the attack environment you are facing.



### Try Security Simplified – for Free!

Powerful security does not need to be complicated or require up-front fees. Experience the vTPN Security Service at no charge through our 30-day trial.

Don't Fall Victim to Ransomware. Learn more at <https://go.veea.com/vtpnfreetrial>

### About Veeva

The Veeva Edge Platform™ provides everything organizations need to quickly and easily tap into the power and benefits of Edge Computing. VeevaHub Smart Computing Hub™ connects to form an elastic, scalable, easily deployed, and managed connectivity and computation mesh. Veeva Edge Services use this mesh to address common edge application needs. And Veeva Developer Tools accelerate the deployment of our partners' and customers' edge and IoT solutions. Veeva is blazing the path to new levels of integration, performance, and value at the network edge, resulting in operational simplicity, lower cost, and greater user satisfaction. For more information, visit <https://www.veea.com> and follow Veeva on [LinkedIn](#) and [Twitter](#).

### Intelligently Connected™

Veeva, Inc.  
164 E 83rd Street  
New York, NY, 10028  
[info@veea.com](mailto:info@veea.com)  
+1 (855) 488-7332

©2021 Veeva, Inc. All rights reserved.  
PB-VTPN-001-0921

